

**SKYDECOR**  
ELEGANT PVC LAMINATES

**Skydecor Laminates Pvt. Ltd.**

Works: Plot No. 136, Ecotech-1 Extension,  
Greater Noida, G.B. Nagar, Uttar Pradesh-201308

Email: [skydecorlam@gmail.com](mailto:skydecorlam@gmail.com)

Website: [www.skydecor.in](http://www.skydecor.in)



**LOCAL के लिए  
VOCAL**



Channel Partner



A PIECE  
OF MEANINGFUL  
*Marble art*

**SKYDECOR**  
ELEGANT PVC LAMINATES



A PIECE OF MEANINGFUL  
*Marble art*



**SKYDECOR**  
ELEGANT PVC LAMINATES



A PIECE OF MEANINGFUL

*Marble art*

COLLECTION 2020-21



Skydecor Laminates Pvt. Ltd. established in the year 2016, as the first manufacturer of PVC laminates in India, has successfully completed four years of profitable operations. From a humble beginning of 32 designs, producing 2000 sheets per month for a year, we have augmented and diversified our range by leaps and bounds to more than 500 designer laminates, while being the largest manufacturer with the capacity to produce 1.5 million sheets per annum.

We started our journey as the first manufacturer of India by educating and creating awareness of PVC Laminates. Our commitment to deliver quality products, along with prompt services has earned us a pioneering name in the industry.

Our manufacturing unit, based out of Greater Noida, Uttar Pradesh, has the potential to manufacture a wide range of elegant and one of a kind eco-friendly PVC laminates of different styles and textures, namely-metallic, laser, designer prints, high gloss, wood grain, soft touch/super matt, marble. Each of these give a very unique and polished look to the homes and offices they adorn. It is due to these factors that we are a very reputed brand in the decorative PVC market.

We have gradually built our selves up to a brand that believes in perfection, and variety. This is evident through the number of unique designs and textures we launch every year, including the first ever launch of anti-bacterial and anti-scratch PVC laminates in the 20-21 catalogue.

We provide our customers with the largest range in options, best quality material available in the market, with a huge sales network throughout the nation. We currently have three renowned brands of PVC Laminates in the market.

Due to our nationwide sales network, a market savvy team, alongside dedicated channel partners in all major cities of India, our brand is set to grow manifolds and emerge as the largest manufacturer of PVC laminates in India. Our commitment to offer excellent quality and customer satisfaction remains steadfast.

# about us



A PIECE OF MEANINGFUL *Marble* art

## Features



**Eco-Friendly**  
We don't harm the mother to make our PVC laminates



**90° Bendable**  
Our PVC laminates can be bended upto 90° & applied to hide the edges.



**Non Toxic**  
Because we care for your health



**Water Proof**  
Our PVC laminates do not adsorb water unlike other natural materials.



**Recyclable**  
We strongly support recycling for the protection of the environment.



**Anti-Borer**  
All our PVC laminates are borer free.



**Anti-Termite**  
We know that you don't like pests



**Fire Retardant**  
All our PVC laminates are fire retardant

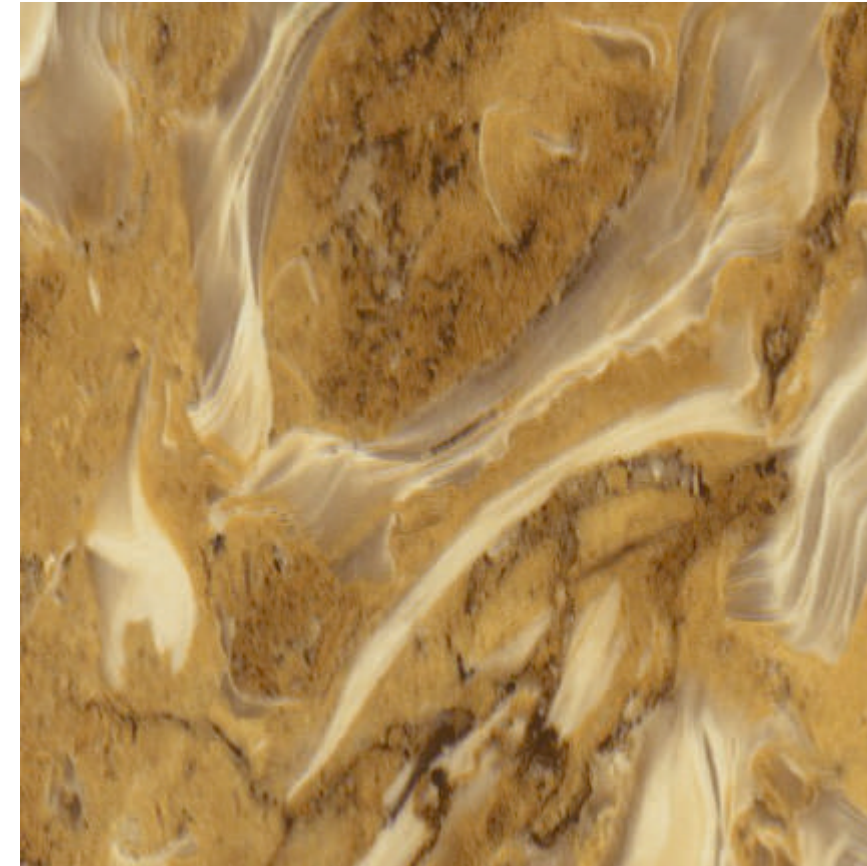
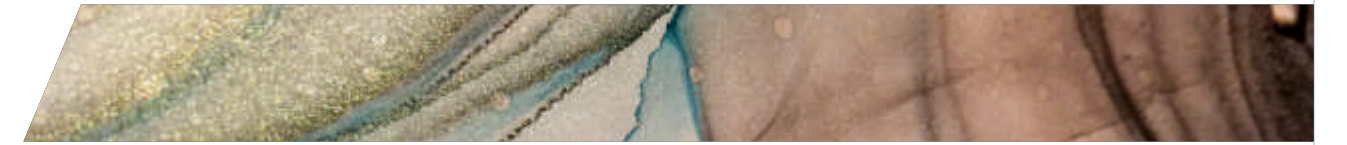


**Lead Free**  
We use lead free material to make our PVC laminates





Marblex Available in 3.25 mm thickness only



SD 3001

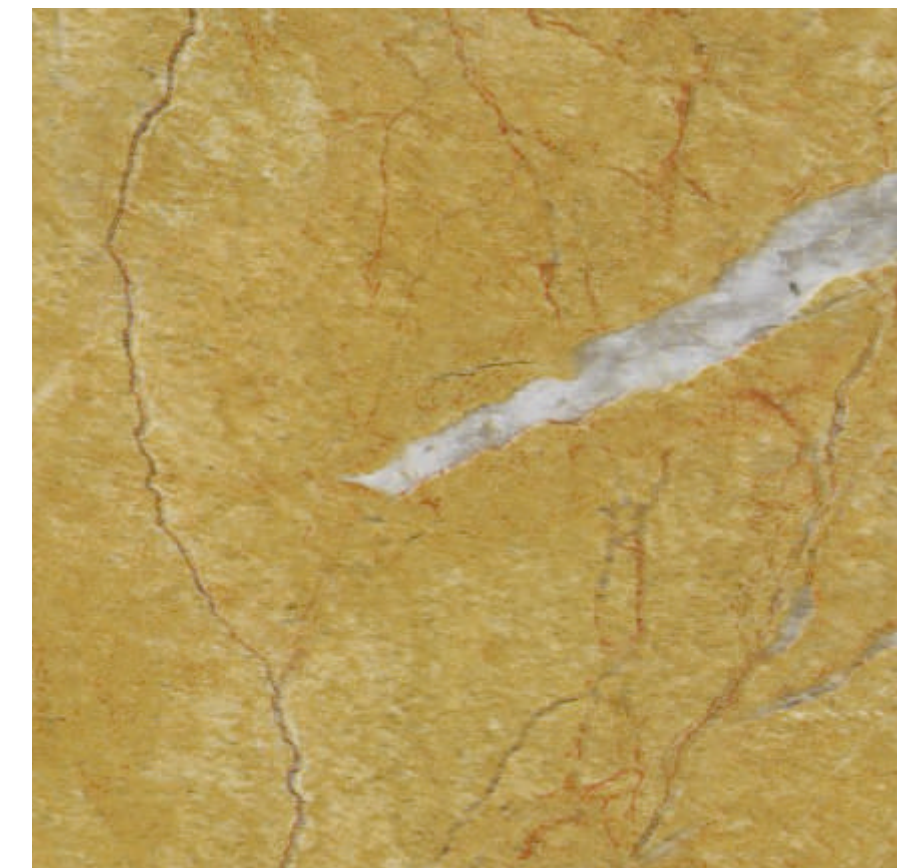


SD 3002

**SKYDECOR**  
ELEGANT PVC LAMINATES



SD 3003

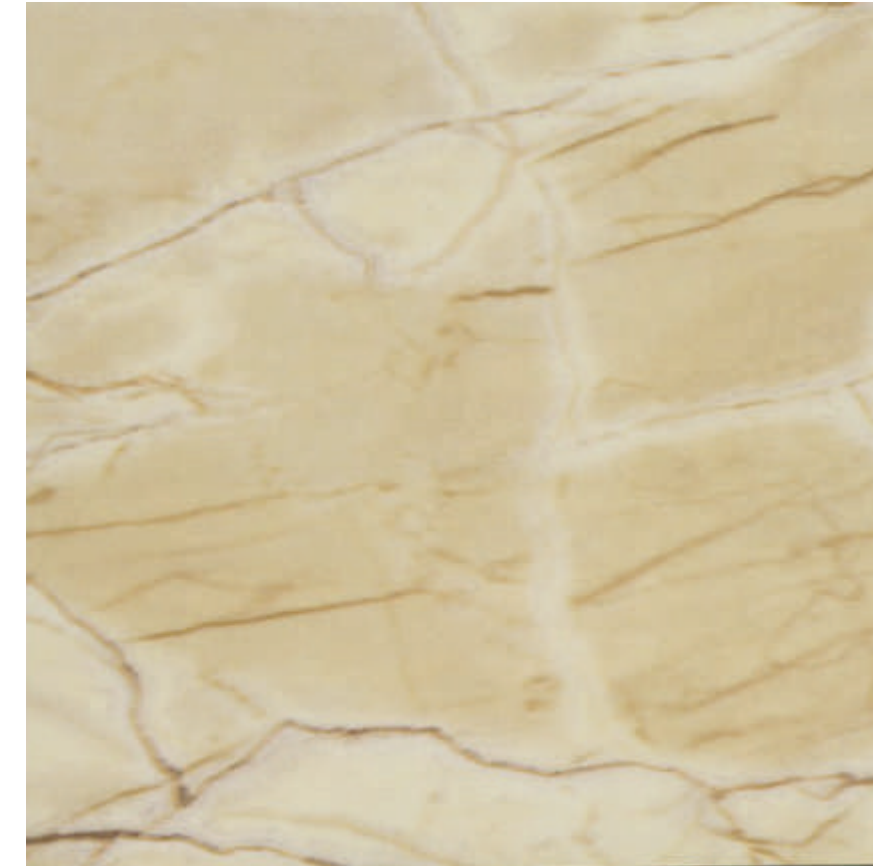


SD 3004

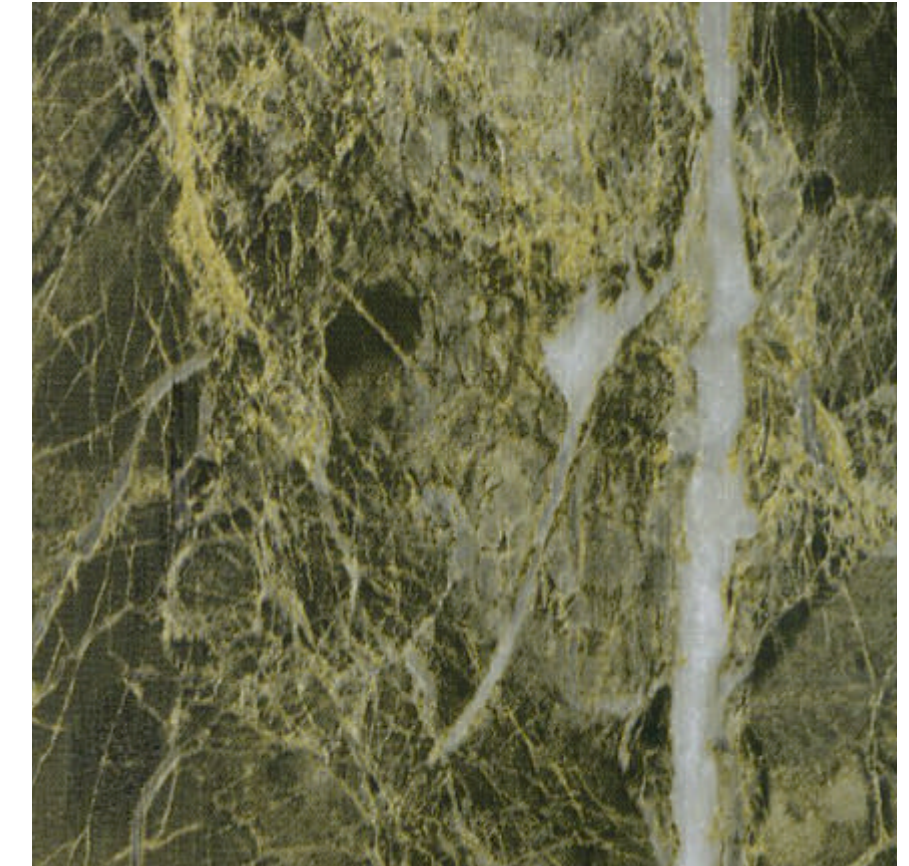
A PIECE OF MEANINGFUL *Marble art*



Marblex Available in 3.25 mm thickness only



SD 3006

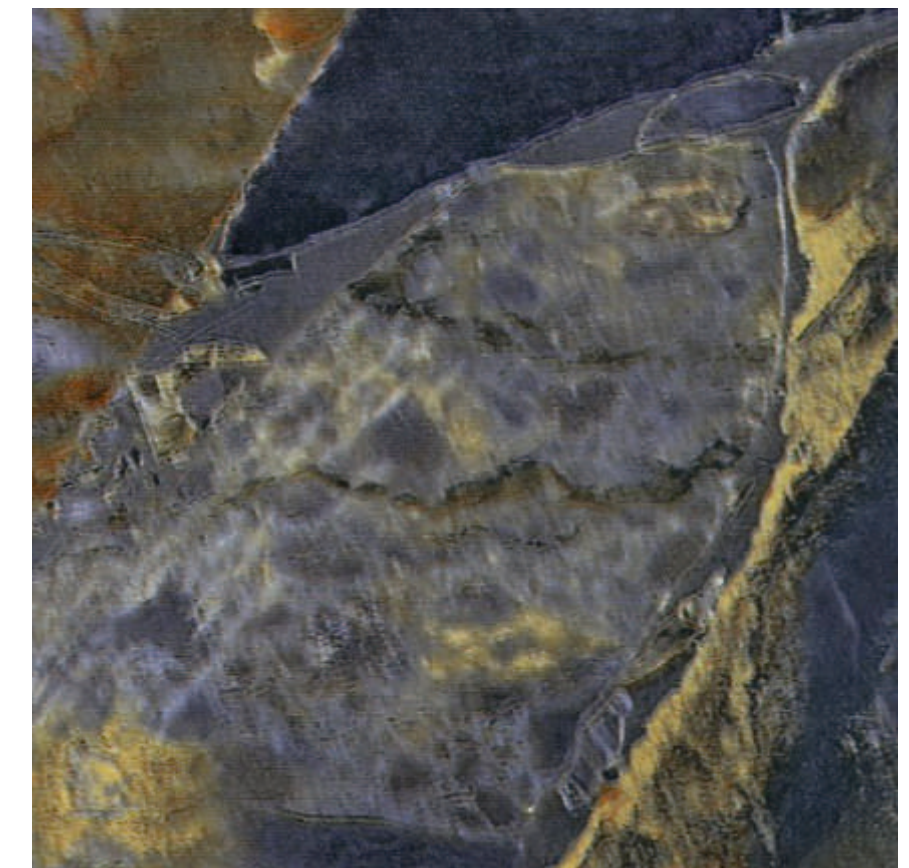


SD 3008

 **SKYDECOR**  
ELEGANT PVC LAMINATES



SD 3009

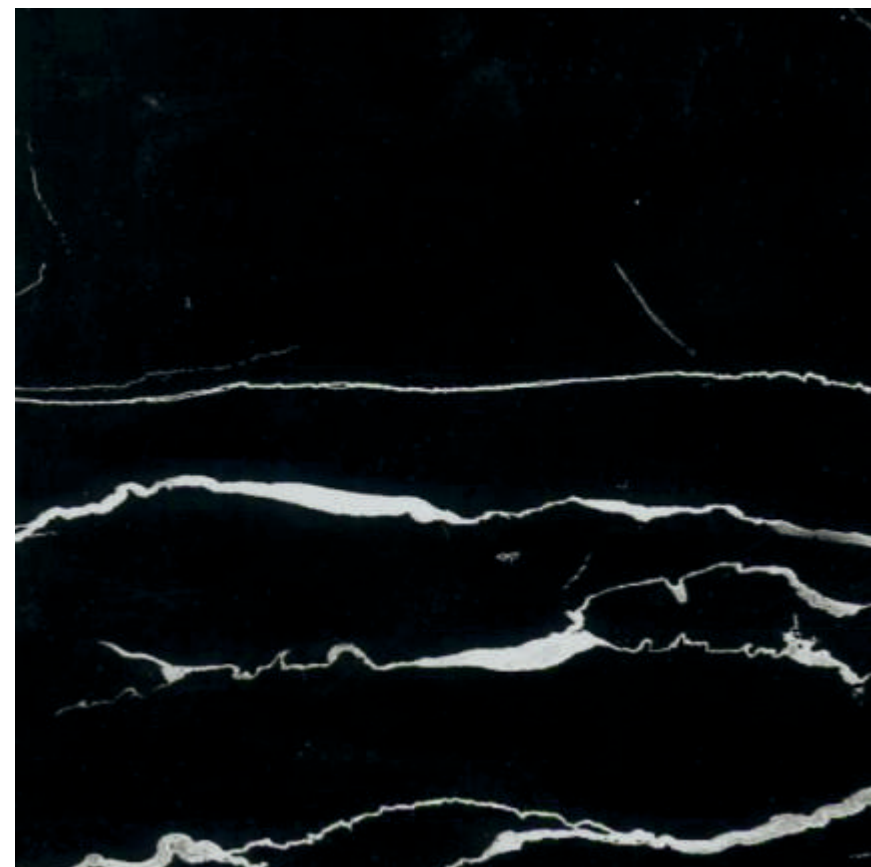
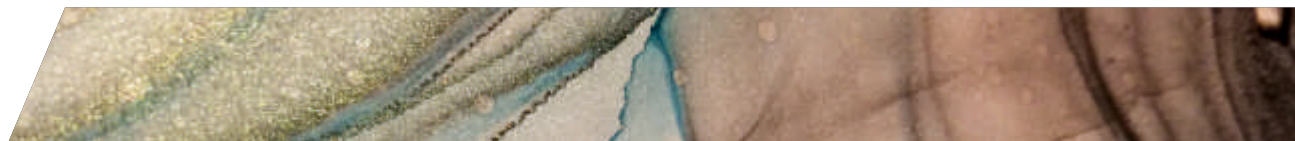


SD 3010

A PIECE OF MEANINGFUL *Marble art*



Marblex Available in 3.25 mm thickness only



SD 3011

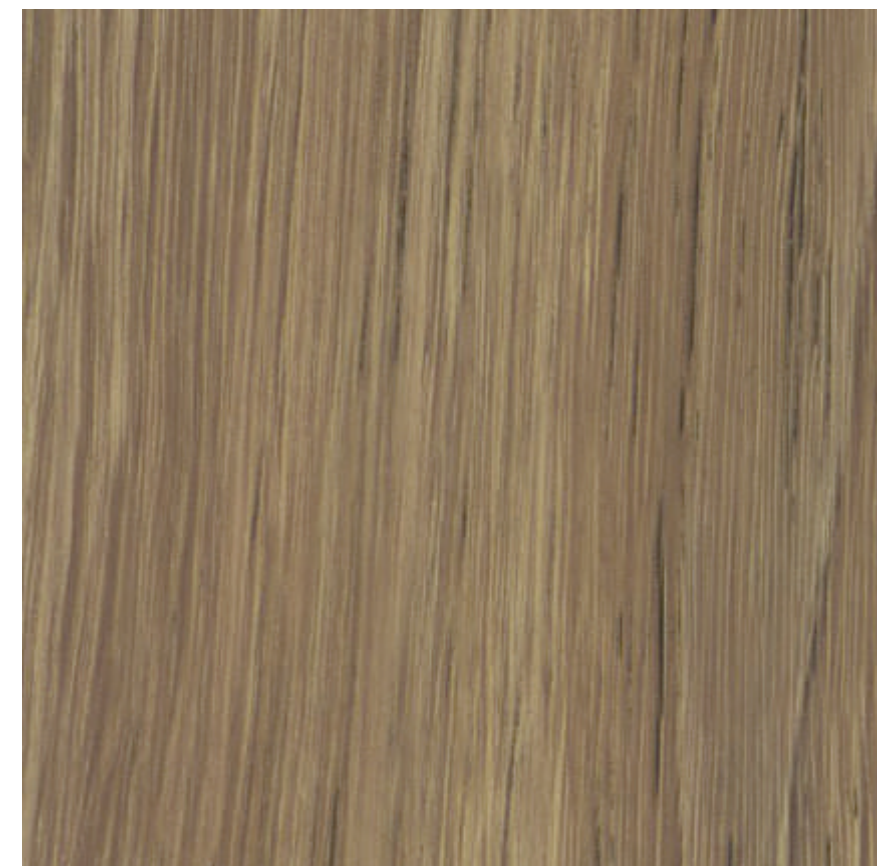


SD 3012

**SKYDECOR**  
ELEGANT PVC LAMINATES



SD 3013



SD 3014

A PIECE OF MEANINGFUL *Marble art*



Marblex Available in 3.25 mm thickness only



SD 3015

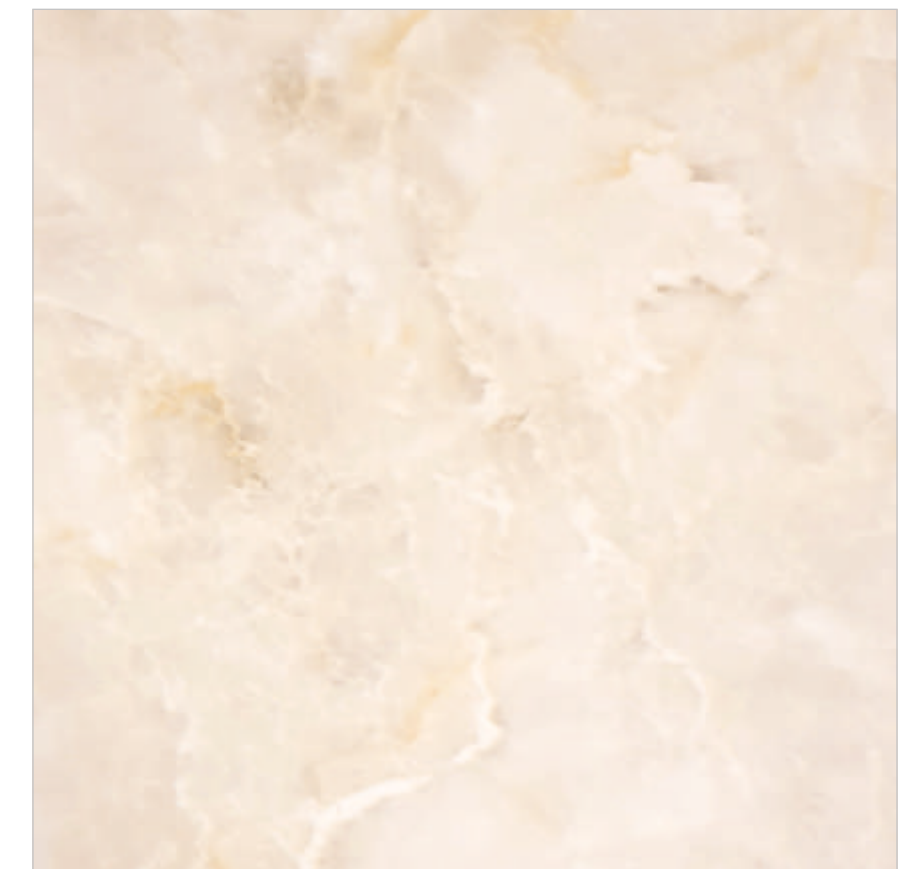


SD 3016

 **SKYDECOR**  
ELEGANT PVC LAMINATES



SD 3017



SD 3018

A PIECE OF MEANINGFUL *Marble art*

## Technical Specifications

### PRODUCT INFORMATION

Thickness : 3.25mm

Standard Sizes : 1220mm X 2440mm

Sheet Options : Length : Any (on order)  
Width : 1220mm

Range : These Elegant PVC Laminates come in a wide range of design, colours and finishes.

CUSTOMIZED SIZES AND SHADES CAN BE DEVELOPED ON REQUEST.

Adhesive : These laminates are easy to apply with the standard laminating system, including most of the conventional water and solvent based adhesives normally used with plastic laminates.  
We DO NOT recommend the use of heat activated adhesives.

Lamination : Proper substrates must be used and careful bonding procedures must be observed.  
Substrates should be of good quality plywood, PVC Board high density particle board, or high quality fiber board. The face of the substrate must be smooth and free of grease, wax, dust, chips and other foreign matter. We DO NOT recommend any kind of coat like PU base, melamine, lamination (wax) on our products.

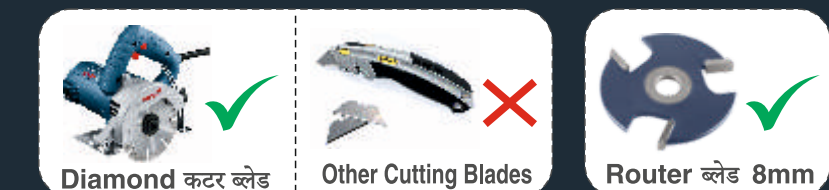
Cutting & Machining : These laminates can be cut by using sharp diamond blade cutter only. We recommend the use of smooth file to feather all corner edges.

Bending : Kindly use V-Groove cutter to bend the sheets at 90°. For any difficulty please contact SKYDECOR.

Maintenance : Any cleaning agent containing acids, alkalis or abrasive should NOT be used to clean the laminate. Exposure to sunlight should be avoided.

Note : Skydecor warrants that all its products are free from manufacturing defects and perfectly fit for use in normal conditions. In case of any claim, the liability the company's is however limited to the cost of the product only. There may be batch to batch colour variation. The sample swatches only represent the designs, colours and finish. They do not represent the actual thickness.

KINDLY REMOVE THE PROTECTIVE FILM WITHIN 7 DAYS OF INSTALLATION OF LAMINATES.



Diamond कटर ब्लेड

Other Cutting Blades

Router ब्लेड 8mm

Disclaimer:

The laminates in the catalogue may differ in colour from the original laminates.

Exuberance